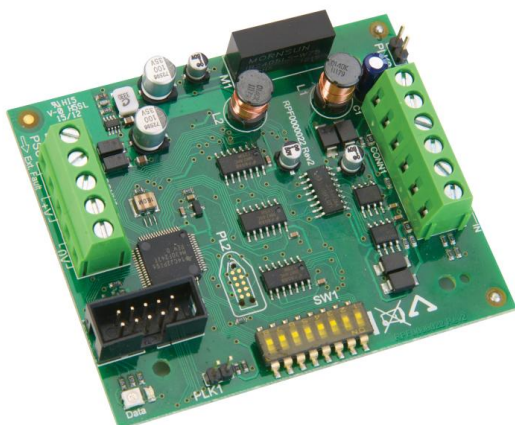


# ZFP Hi-Net Multi-Path Fault Tolerant Network PCB

Part No. **ZHN**



## Overview

Allows the interconnection of up to 64 ZFP Main Panels (any mix) and up to 64 ZFP Compact Controllers over a two-wire RS485 ring-wired, multi-path, fault-tolerant 'Hi-Net' network.

One ZHN required per ZFP Main Panel (ZFP Compact Controllers include a ZHN PCB as standard).

RS485 Protocol.

Max. cable length between nodes = 1KM

Max. cable length of entire network = 128KM

For retrofits, multiple ZHNs can be wired in a non-fault tolerant, single-path network configuration (Max. 8 nodes; Max length of entire network must not exceed 1KM).

## Technical Specifications

Type	RS485.
Indicators	Network Status LEDs.
Connections	From node to node, connect A (IN) to A (OUT), B (IN) to B (OUT) and C (IN) to C (OUT). Terminals A and B are for data comms and terminal C is for earth screens.
Product dimensions (mm)	TBC.
Weight	TBC.
Network specification	Multi-path, fault-tolerant RS485. Max. 126 network nodes (up to 64 ZFP mains & 64 Compact Controllers); Max. cable length of network: 128km; Max. cable length between nodes: 1km. For standard non-fault tolerant network specs see main instructions.
Notes	Each node requires a unique ID number (1-126) which is set via Dip switch (SW1) on the ZHN PCB.



T 01942 322744 E sales@c-tec.co.uk  
F 01942 829867 W www.c-tec.com



C-TEC, Challenge Way, Martland Park, Wigan, WN5 0LD United Kingdom