

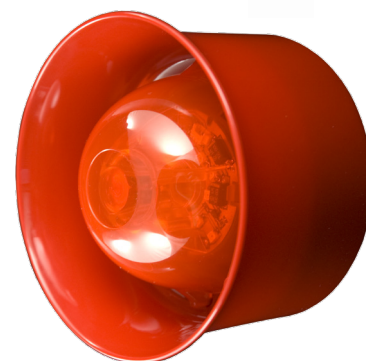
ESPintelligent

CHQ-WSB

Analogue Wall Sounder Beacon

Features

- ▶ Loop Powered
- ▶ Single Loop Address - addressed via the TCH-B200 Hand Held Programmer
- ▶ Variable Sound Output 90 ~ 102 dB(A) (± 2 dB(A)) output at 1 metre
- ▶ Sounder and Beacon can operated independently*¹
- ▶ High Intensity LED technology
- ▶ Variable flash frequency*
- ▶ Fits Hochiki Standard or Isolator Base
- ▶ Weatherproof Kit available
- ▶ SIL Level 2 approved variant available
- ▶ 51 User-Selectable Tones (all tones EN54-3 compatible).



Description

Model CHQ-WSB is an addressable loop powered Wall Sounder Beacon innovatively designed to provide a range of tones and volumes with a maximum output of up to 102dB(A)

(± 2 dB(A)) with low current consumption. The unit features an integral beacon within the horn utilising high intensity LED technology and is designed to fit to the Standard Base (YBO-R/3(RED)) or the Isolator Base (YBO-R/SCI(RED)). The sounder is IP rated to IP21 for internal use but it can be made weatherproof by utilising the WS2-WPK Weatherproof Kit, which consists of a specialised back box and gasket set.

Also incorporates an auto shutdown mode* which allows the user to set a fixed time within which the sounder will operate, before automatically silencing itself, ideal for minimising noise pollution.

Note: Although the TCH-B100 Hand Held Programmer will allow addresses between 128 and 254 to be programmed into the CHQ-WSB, addresses 1 to 127 ONLY should be used.

Specification

| | |
|---------------------------------------|--|
| Ordering Code | CHQ-WSB WS2-WPK (Weatherproof Kit) |
| Operating Voltage | 17 ~ 41 Vdc |
| Quiescent Current (typ) | 150 μ A (with YBO-R/3(RED) & YBO-R/3(WHT)) 200 μ A (with YBO-R/SCI(RED) & YBO-R/SCI(WHT)) |
| Sounding Current (typ) | 2 mA (90 dB(A) (± 2 dB(A)) @ 1 m) ~ 8 mA (102 dB(A) (± 2 dB(A)) @ 1 m) |
| Additional Current when Beacon active | + 5 mA |
| Sound Output (at 1 metre) | 90 ~ 102 dB(A) (± 2 dB(A)) @ 24 Vdc or above |
| Number of Tones | 51 |
| Tone Frequency Range | 300 Hz ~ 2850 Hz |
| Operating Temperature Range | -10 °C to +50 °C |
| Storage Temperature Range | -30 °C to +70 °C |
| Maximum Humidity | 95% RH - Non Condensing (at 40 °C) |
| Colour/Case Material | Red / PC ABS |
| Lens Material | Translucent PC |
| Ingress Protection Rating | IP21 (IP65 with WS2-WPK) |
| Weight (g)/Dimensions (mm) | 164 / H112 x W112 x D67 |
| Base Fixing Centres (mm) | 48 ~ 74 |

*Dependent on control panel compatibility.