



# Mx<sup>\*</sup>Pro<sup>5</sup>

The powerful, versatile fire panel  
for complete peace of mind





Book your place on  
our FIA certified  
CPD A Guide to  
Meeting BS 8629



# EvacGo

## The evacuation alert system for easy BS 8629 compliance

Building Regulations  
now require  
evacuation alert  
system installation  
in all residential new  
builds over 18m.\*

EvacGo makes it easy to comply with the Approved Document B amendments. Wired, wireless and hybrid options, plus a choice of leading sounder protocols, give you full design flexibility to meet the needs of your site.

This robust system combines proven power and performance with simple operation for fast, effective resident notification in fire situations – ensuring safe evacuation and complete peace of mind.

Creating a safer future

\*In England and Scotland.

Advanced – made in the UK. Trusted around the world.

Discover more: [advancedco.com](http://advancedco.com) | [enquiries@advancedco.com](mailto:enquiries@advancedco.com) | +44 (0)345 894 7000



# Contents

About Advanced	4
The Powerful, Versatile Fire Panel	6
MxPro 5 System Diagram	9
MxPro 5 Panels	10
MxPro 5 Features	12
TouchControl	14
Complete False Alarm Management	15
Advanced Networking	16
Fire Panel Software	17
Technical Support	18
MxPro 5 Parts List	19





# Advanced – Made in the UK. Trusted around the world

At Advanced, we're committed to creating a safer future. We deliver fire protection and life safety solutions that protect people and property in more than 80 countries across the globe.

Our products are shaped by decades of research and development expertise as well as ongoing investment in new technologies. This ensures they provide years of high performance and reliability – for ultimate peace of mind.

Everything we deliver is rigorously tested and approved to exacting quality standards – which is why Advanced products are trusted by customers the world over and synonymous with quality, performance and ease of use.



Advanced Headquarters, Newcastle, UK

We understand that few fire protection challenges are the same, so as well as our mass-customised ranges, we also offer fully-customised solutions. This flexibility gives you complete control over the functions, format and finish of products to suit your site's unique specification.

We are dedicated to providing excellent service and have an international network of offices and agents to help you access sales support with ease – wherever you are in the world.



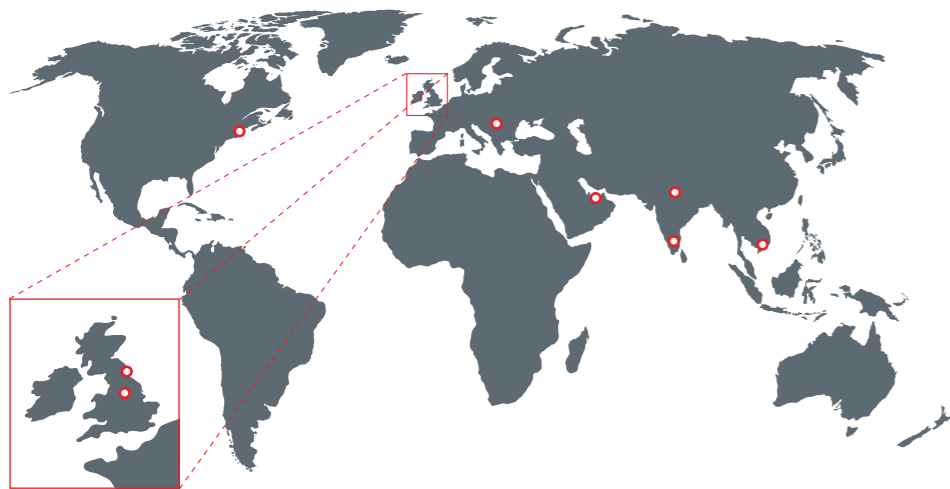
In addition, our training and technical services are free of charge to all our direct customers and consistently rated as excellent.

For added reassurance, Advanced is part of the safety sector of FTSE 100 company Halma plc. This global group of life-saving technology companies has a clear purpose to grow a safer, cleaner, healthier future for everyone, every day.

Advanced was named **Fire Safety Systems Manufacturer of the Year** at the Fire & Security Matters Awards 2022.



A Halma company



Durham Cathedral, Durham, UK



HMS Belfast, London, UK

MxPro<sup>5</sup> protects...



London Underground, London, UK



22 Bishopsgate, London, UK



University of Edinburgh, Scotland, UK



King's Cross Western Concourse, London, UK



# The Powerful, Versatile Fire Panel

## MxPro<sup>5</sup>

1. Choose your panel
2. Choose your detector
3. Choose your installer

- gives you maximum freedom and flexibility, whilst delivering performance, quality and ease of use
- enables specifiers to match the best-performing panel with the most appropriate detector range for the site
- allows installers to work with easy-to-use fire alarm systems, free from restrictive agreements
- means that end users aren't tied to expensive maintenance contracts
- is a reliable, scalable solution, backed up by lifetime technical support
- includes intuitive programming, powerful networking, comprehensive cause and effect and unique diagnostic features that put you in complete control of your fire protection and provide that all-important peace of mind
- is fully approved to EN54 Parts 2, 4 and 13
- is designed to go anywhere you need high quality, reliable and easy-to-use fire detection and control, from mass transportation and industrial complexes to landmark developments, historic buildings and public services.



MxPro 5 fire panels have been certified by FM Approvals, enabling them to carry the FM APPROVED diamond, one of the most prestigious certification marks in the world.



### Easy to install and use

MxPro 5 is built on Advanced's outstanding pedigree of fire alarm and detection experience, bringing you a range of EN54-approved fire panels that are simple to install, configure and use.

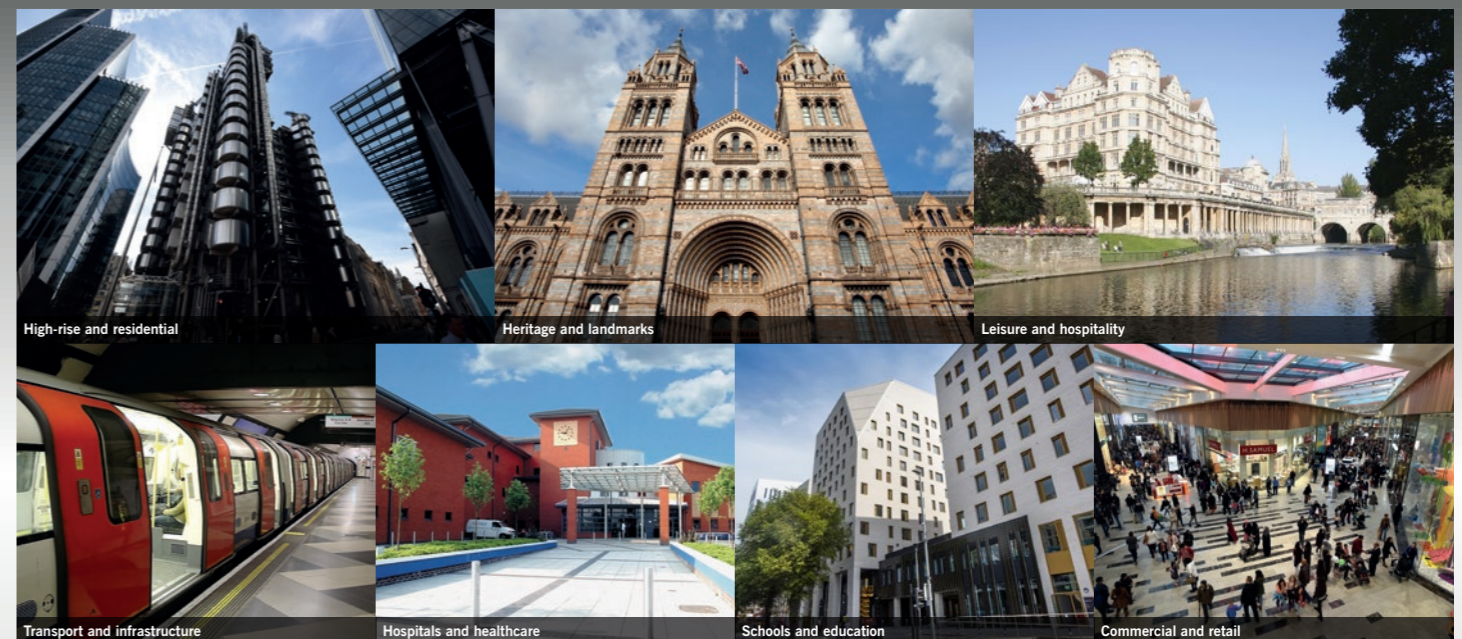
- Easy-fix removable chassis and in-built software make MxPro 5 fire panels quick and easy to set up
- Powerful networking, extensive configuration options and comprehensive cause and effect put you in complete control
- Intuitive controls and menus, with simple click-and-select programming, for simple & easy commissioning
- The panels support intelligent remote terminals, IP Gateway, I/O drivers and BMS interface, for integration with building management systems
- our highly-rated technical support team can help with advice, tips and training. We also have an extensive collection of 'how to' videos on our YouTube channel.



### Scalable and versatile

We know that sites can expand, and fire protection requirements change and evolve over time. That's why we've designed MxPro 5 to be scalable and versatile, able to adapt as required with minimal fuss or disruption.

- Standalone one, two, four or eight loop formats so you can choose the panel size that meets your requirements and budget
- Remote display terminals available including TouchControl – our 10-inch touchscreen with interactive maps and zone plans for public reception areas
- Up to 254 devices per loop (depending on chosen protocol) and an overall capacity of over 200,000 devices per network
- Every panel is networkable with up to 200 network nodes and 2,000 fire detection zones
- Panels can be support wired and wireless loops, or a hybrid of both (depending on chosen protocol)
- Versatility includes a choice of leading detector partners – Apollo, Argus, Hochiki and Nittan.







## Packed with premium features

Every MxPro 5 panel comes with a host of advanced features built in as standard, giving you peace of mind that you won't need to buy expensive add-ons in the future.

- Unique diagnostic features include 'scope on board' to provide readings on the panel from any loop, making it easy to identify and investigate any issues
- Network diagnostic tool prevents fires and faults from being transmitted across the network
- Built-in multimeter measures all voltages and currents across the system, so you can speed up the commissioning process by identifying voltage/current levels in real time
- Every panel includes AlarmCalm false alarm management software to help you minimise unwanted false alarms, with 200 programmable false alarm management areas per panel
- You can monitor the circuit from any panel or remote terminal and see a complete device history on every panel
- Standard peripherals include direct USB and RS232 PC connections, and peripheral expansion is built in for added peace of mind
- Modular in construction, with mass customisation options including the ability to programme your own company logo to appear on the fire panel screen
- 20 built-in, fully programmable LEDs as standard without the need to buy a separate LED zone card
- On-board or optional remote battery temperature sensor ensures optimum operational efficiency and life
- 4 programmable push buttons on the front of the panel for user customisation according to your fire system's needs
- 5,000 event and diagnostic, and 500 fire event log entries, for comprehensive tracking and auditing
- Timed enablement of isolated zones, input and output devices, to program and manage fire system response and reporting.



## Powerful, flexible service reporting

Every MxPro 5 panel includes an inbuilt, easy-to-use, windows-based service tool which saves you time and money by providing easy, instant access to historic and real-time device data, and shows proof of servicing at a glance.

- Demonstrate proof of servicing, download service reports, inspect the device history and keep track of service schedules for safety audit compliance
- Customisable data filters make it easy to focus on potential trouble spots and ensure they're checked and tested during servicing
- Predict which devices are becoming contaminated so you can clean/replace them before they cause a false alarm
- Customise reports to show the data you need and export it as PDF, Excel or HTML files to prove compliance simply and efficiently.



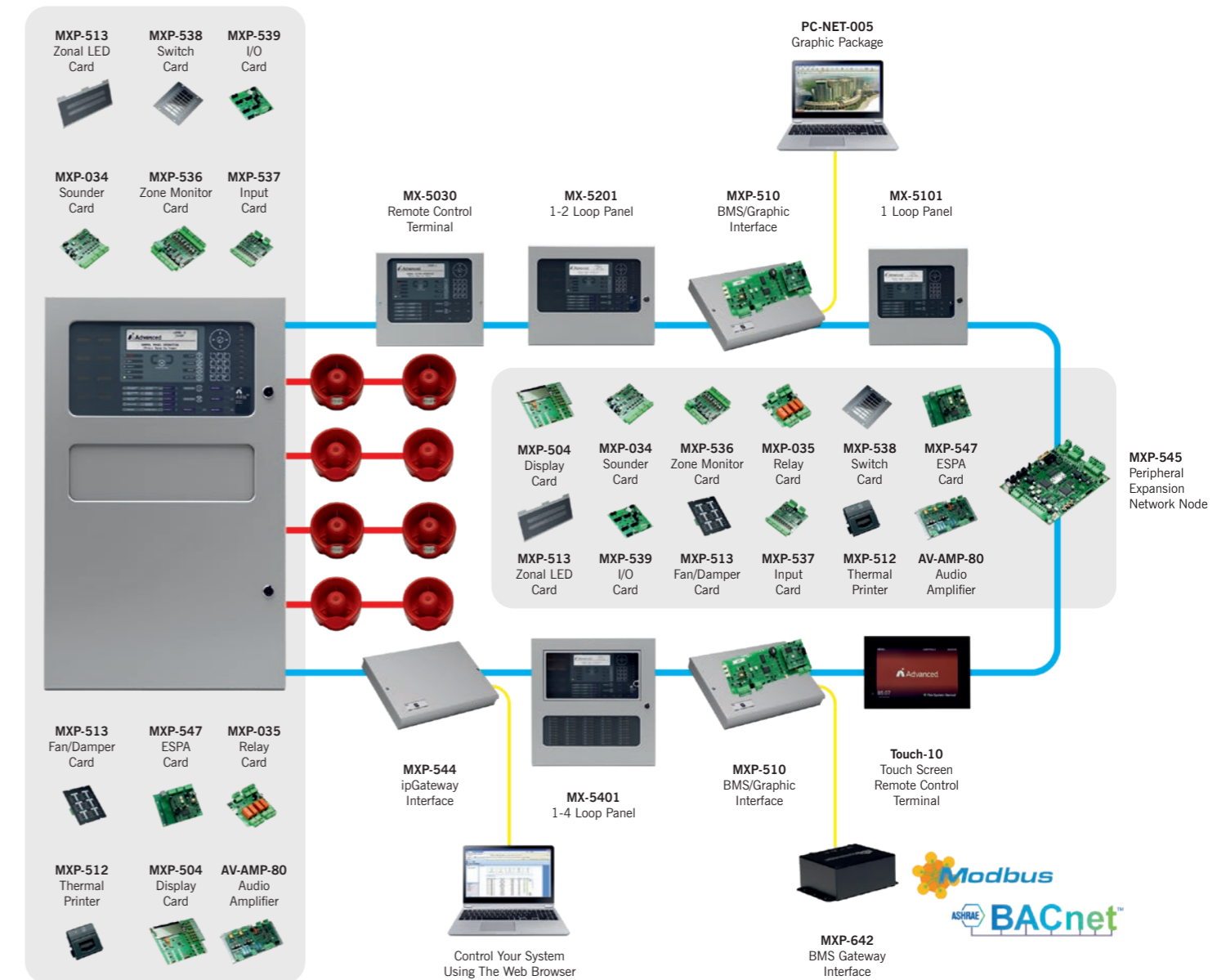
## Why do I need Part 13?

**Part 13 compliance ensures that a fire system will continue to perform to its maximum capability during a fire situation.**

Increased current in alarm conditions combined with a high-resistance connection (e.g. an incorrectly tightened screw in a sounder base), could prevent the sounders and beacons from operating on what would have incorrectly appeared to have been an acceptable 'fault-free' installation.

Advanced's MxPro 5 is one of the few EN54 Part 13 approved panels available. Axis EN continuously monitors all transmission lines for compliance, checking and reporting faults every minute of every day.

# MxPro<sup>5</sup> System Diagram



Please note there is a maximum of 2 peripherals per panel.

## MxPro 5 – 1 Loop



- Single loop
- Small enclosure
- Maximum 7Ah internal batteries
- 20 programmable LEDs
- Optional programmable key switch
- Programmable input
- Medium, large and deep enclosure options

## MxPro 5 – 2 Loop



- One or two loops
- Medium enclosure
- Maximum 12Ah internal batteries
- Up to 50 additional programmable LEDs
- Up to 8 programmable key switches or 4 plus printer
- Plexi-glass door option
- Large and deep enclosure options

## MxPro 5 – 4 Loop



- One to four loops
- Large enclosure
- Maximum 17Ah internal batteries
- Up to 200 additional programmable LEDs
- Up to 8 programmable key switches or 4 plus printer
- Plexi-glass door option
- Deep and extended enclosure options

## MxPro 5 – 8 Loop



- Two to eight loops
- Extended enclosure
- Maximum 45Ah internal batteries
- Up to 200 additional programmable LEDs, 2 x switch cards or mimic
- Up to 8 programmable key switches or 4 plus printer
- Plexi-glass door and external battery box option

## MxPro 5 – Integrated Peripheral Bus

- Integrated P-Bus as standard on all MxPro 5 panels
- Up to 32 expansion cards can be added to an MxPro 5 panel
- Peripheral expansion option cards include:
  - 4-way relay card
  - 4-way sounder card
  - 10-way monitored input card
  - 10-way relay card
  - Conventional zone card (8 class B or 4 class A zones + 3 programmable relays)
  - 16-way push button/48 LED card
  - 16-way input/48 output (direct drive LED outputs)
  - Fire and fault routing/protection card
  - Redundant controller

## MxPro 5 – Remote Terminals

- Four types available including:
  - TouchControl touchscreen with active maps
  - Remote display terminal
  - Remote control terminal with additional mute, silence, reset and resound keys
  - Remote control terminal with additional LED status indication, four programmable push buttons, mute, silence, reset, resound, lamp test and evacuate keys
- Optional level 2 access enable key switch. (Not TouchControl)
- Integrated standard or fault-tolerant network interface with screen termination point
- Programmable display for up to 2,000 zones along with sector-based controls



## MxPro 5 – Rack Mount

- Rack-mountable control panels
- Additional 16U and 20U high IP55 enclosures
- Rack-mount peripheral chassis plate, LED and switch card module options
- Dedicated mimic door option



# Go

## The powerful, flexible, single-loop fire panel

Designed to be fast to fit, quick to configure and easy to use, Go saves install time whilst bringing you complete peace of mind that your single-panel site has the highest levels of fire protection.

Offering cost-effective access to popular premium features from our MxPro 5 range in a simpler, non-networkable format, Go provides powerful protection for a wide range of smaller sites.

Packed with future-proof technology and flexible features – including false alarm management, built-in zonal LEDs and a handy service tool – Go's ready to become your Go-to!

Creating a safer future



# MxPro<sup>5</sup> Features

Hardware Features	
<b>Display backlight</b>	White backlit display Improved efficiency with programmable dimming options Software-driven contrast adjustment via menu
<b>PC connections</b>	USB, RS232
<b>Peripheral expansion bus</b>	Built in as standard on all panels Extended range of P-Bus option cards
<b>Wiring fault monitoring</b>	EN54-2: Open circuit, short circuit  EN54-13: Continuous checking for increases in resistance, (loose terminations), partial shorts etc.
<b>Control keys</b>	Mute, Silence, Reset, LED Test, Resound, Evacuate and dedicated More Alarms buttons on control panels and large repeater Configurable keypad repeat keys
<b>Front panel push buttons</b>	4 programmable function buttons on control panels and large repeater
<b>Battery charging</b>	Charger current, voltage and temperature available from any display on a network Built-in or remote battery temperature sensor
<b>Zone LEDs</b>	20 integral red LED indicators included as standard on control panels and large repeater Can be assigned to any fire zone or programmable for other uses  Up to 200 additional LEDs with Large, Deep and Extended enclosures. (Up to 50 in Medium enclosure) Options include red, yellow and (bi-colour) red/yellow or green/yellow column format with slide-in labels
<b>Programmable input</b>	Dedicated monitored switch input as standard on all panels
<b>Programmable key switch inputs</b>	Built-in as standard on all panels
<b>Printer</b>	Optional on-board printer. No additional battery pack required. Integral paper feed button. Printer fault conditions displayed on panel, prints customer logo
<b>Standards</b>	EN54-2, 4 and 13
Software Features	
<b>Independent general event and fire event logs</b>	Yes – on all panels and repeaters Any panel can be configured as a network-wide main event log
<b>Event log entries</b>	5,000 + 500 fire Additional logging for investigation delays and any enable/disable actions
<b>Timed disable options</b>	Permanent or automatic timed re-enablement of any input or output device
<b>Enable/disable inputs by zone</b>	<ul style="list-style-type: none"> <li>• All inputs</li> <li>• Selected inputs</li> <li>• Only automatic inputs</li> <li>• Only manual inputs</li> <li>• All other inputs</li> </ul>
<b>Enable/disable outputs</b>	Disable by output purpose Configurable disable outputs menu options include: sounders, relays, beacons, fire routing, fault routing, fire protection, pager, all or selected Disablement of outputs across network configurable by sector mask
<b>Real-time clock</b>	Yes - no lithium battery required
<b>Languages</b>	Supports multiple different character sets (code pages) and languages

Network Features	
<b>Max devices per network</b>	200,000
<b>Max nodes on network</b>	200
<b>Sectors</b>	200
<b>Maximum fire zones displayed</b>	2,000 on all panels
Programming Features	
<b>Independent building areas for false alarm management</b>	201 areas per panel Local or global alarm acknowledgement facility
<b>Zone LEDs</b>	All LEDs fully programmable PC configuration presented graphically Primary/secondary activation
<b>Buzzer options</b>	Smart latch of faults Fault notification can resound daily Service option to inhibit by time clock
<b>Programmable input actions</b>	22 – including new supervisory, fire routing and fire protection confirmed + alarm acknowledgement actions
<b>Output purpose</b>	Output purpose configurable
<b>Output ringing styles</b>	40 – output activation priority configurable
<b>Zone qualifiers</b>	24 categories of zone qualifiers
<b>Logic statements</b>	1,500 logic lines – programmable options: <ul style="list-style-type: none"> <li>• Inputs</li> <li>• Any 2 inputs</li> <li>• Zone qualifiers</li> <li>• Any 2 zones</li> <li>• General events</li> <li>• Time clocks</li> </ul>
<b>General events</b>	36 categories
<b>Blocking rules</b>	Programmable blocking rules – by general event or output groups
Service and Diagnostic Features	
<b>Device history</b>	For every device the time and date of the: <ul style="list-style-type: none"> <li>• Last activation</li> <li>• Last test</li> <li>• Last disable</li> <li>• Last enable</li> <li>• Date created</li> </ul>
<b>On-board digital storage scope</b>	Yes
<b>View panel voltages and currents</b>	Available from any MxPro 5 repeater or panel on the network
<b>View panel status</b>	View status of all panel circuits across network Firmware version of all internal hardware and peripheral devices can be viewed at the panel
<b>Firmware updates</b>	All hardware flash upgradable via panel USB or serial port
<b>Detector status information</b>	New warning state allows any devices nearing drift contamination limits to be identified during routine servicing before a fault level is reached
<b>Service tool</b>	Download device information Extract event log information Download device history View drift (contaminated) status of detectors Network simulation and test facility



# TouchControl

Easy, visual fire system control

TouchControl is Advanced's touchscreen remote control terminal and repeater.

Easily installed, its HD display enhances any architectural environment and takes system control and monitoring to the next level.

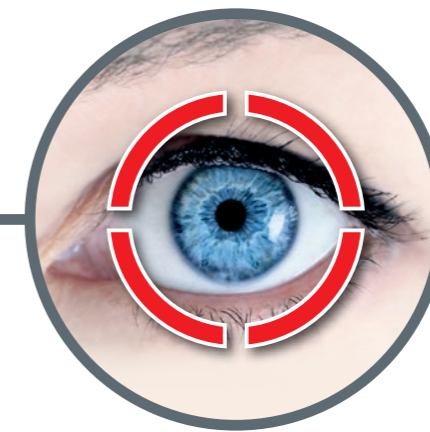
## Features:

- **Attractive, low-profile HD display**  
10" screen enhances prestigious environments
- **Easy slide-in installation**  
Two-part, slide-in assembly for quick first fix and final install
- **Easily configured**  
Fully active remote control terminal and network device almost immediately after installation
- **Interactive maps and zone plans**  
Easily added, using any diagram via our MapApp
- **'At a glance' system status**  
Unique interface allows easy monitoring and management of zones and devices
- **Complete control**  
Three-level access to all the controls you'd find on an Advanced RCT via an easy-to-use interface
- **Customisable screen**  
Choose from the preloaded background screens or add your own including installer logos. Run promotional presentations. Immediately reverts to fire use when system signal received

Contact us now for a demo by emailing [enquiries@advancedco.com](mailto:enquiries@advancedco.com)



Verification



Investigation



Reduction

# AlarmCalm

Redline false alarms

Complete False Alarm Management

AlarmCalm uses fast hardware and powerful software to build a total solution to false alarms that's powerful and easy to configure.

The AlarmCalm button is a fully intelligent verification device that is installed on the loop and works alongside the AlarmCalm software to allow occupants to acknowledge a fire alarm signal locally, if they believe it has been falsely triggered.



## Features:

- **Complete cause and effect**  
In-depth control over alarm verification and investigation delays to outputs
- **Customised management for any site**  
Divide your building(s) into 'building areas', each with quickly applied group or unique false alarm management settings. 200 building areas per panel or 40,000 per network
- **Unlimited points**  
No restriction to the number of points in a building area and you can configure by point
- **Global acknowledgement**  
Panel inputs can be programmed to manage verification and output delays
- **Full event log**  
All verification and output delays recorded in panel event logs
- **Flexible verification**  
Set verification by building area, day/night, on or off, change verification times, verification by second device or device mode change
- **Multiple verification inputs and outputs**  
Inputs can include optical, heat and multisensors, callpoints and AlarmCalm button or other input modules. Outputs can be sounders, beacons and relays etc. Sounder ring styles can be configured
- **Failsafe operation**  
Total control over verification times. You can only extend verification once. Set max number of areas in verification before full fire is signaled
- **Easy management of outputs**  
Output delays are handled in exactly the same way as verifications, making setup very simple

Contact us now for a demo by emailing [enquiries@advancedco.com](mailto:enquiries@advancedco.com)



# Advanced Networking

Our high-performance network technology works across the MxPro 5 range, delivering the easiest setup and best-performing fire panel networks available.

## Easy connection

- Connect all MxPro 5 control panels, remote terminals and network peripherals together using fire-resistant, two-core cable
- Lower installation costs
- Caters for the smallest two-panel network through to the largest 200 panel, wide-area, networked system
- Simply add and connect a network card to any MxPro 5 control panel or remote terminal

## Peer-to-peer system

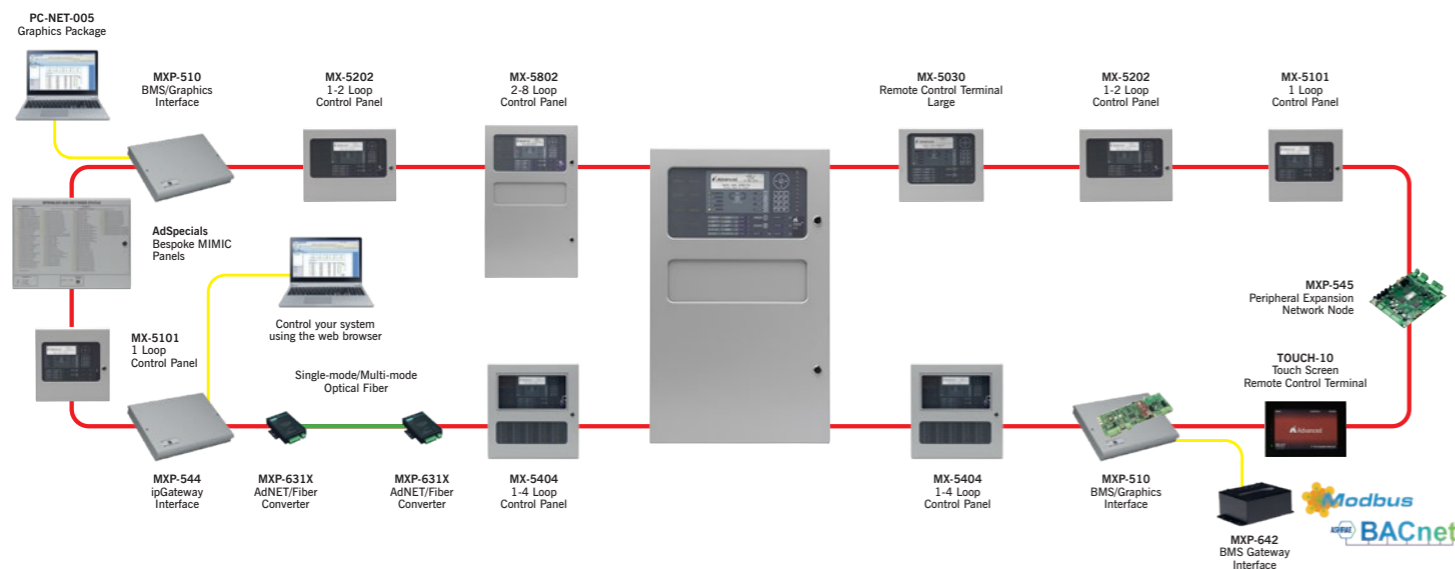
- Does not rely on a single 'master' panel to function
- Information from any input or output device can be passed over the network and displayed on any MxPro 5 control panel or remote terminal
- Details include fire, general alarm, pre-alarm, fault, control inputs and disablement

## Zoning

- Networked systems can share up to 2,000 zones
- Autolearning the devices, adding text and assigning zone numbers is easy
- All other nodes on the network are instantly aware of a panel as soon as it is given a valid network node address

## Diagnostic and status information

- All panels provide valuable diagnostic and status information and have the facility to prevent the transmission of fires or faults during commissioning
- DynamixTools software enables easy configuration of complicated cause and effect for more complex systems
- All configuration data is contained within one user-friendly network configuration file



Type of network	Standard	Fault tolerant
Typical use	Sites where one panel per building controls evacuation	Sites where more than one panel per building controls evacuation
Setup	Standard network card: Mxp-503 and Mxp-003	Fault-tolerant network card: Mxp-503 and Mxp-003
Maximum cable length	Up to 1.5 km	Up to 1.5 km between nodes
No. of nodes	32 (50 with signal buffer)	200
No. of zones	2,000	2,000
Typical time to communicate first event	1 second	3.5 seconds

# Fire Panel Software

DynamixTools fire system software is easy to understand and makes the complicated simple.

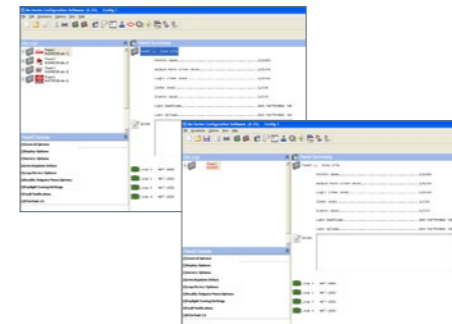
**DynamixTools is a range of software options that helps you achieve what you want to quickly and easily.**

DynamixTools is being continually developed for the MxPro 5 panel range, adding new features and performance enhancements, false alarm management and alarm verification features.

Our position in the global fire industry means we help guide legislation and can implement software changes quickly, keeping our systems right up to date. We also listen closely to our customers and often produce features for specific client requirements.

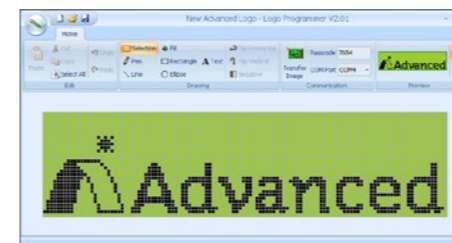
## ConfigTool

- Full configuration of single panel or network system
- Automatic design check of site configuration
- Assistance menu helps the engineer to easily configure panels
- Import and export information and print configuration reports



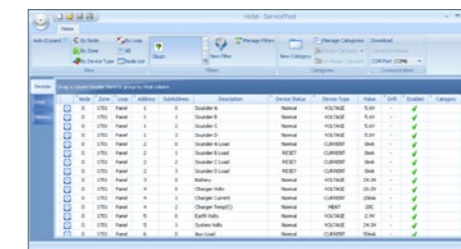
## LogoTool

- Allows the installer's logo to be displayed on the panel's graphical LCD display during normal operation
- Uploads standard bitmap images
- Tool allows creation of logos
- JPG and GIF images can be imported



## ServiceTool

- Extract device information and event logs from single or multiple panels
- Device history including last activation, test, enable, disable and date created
- User-defined filters allow data to be grouped and searched in many different ways
- View device status, analogue values and drift (contaminated) information
- Network simulation and test feature
- Categorise events and create user-defined reports



## TerminalTool

- Virtual panel display supports remote interrogation
- Direct USB/RS232 or remote modem/IP connection
- Real-time status information and control
- Downloadable event log



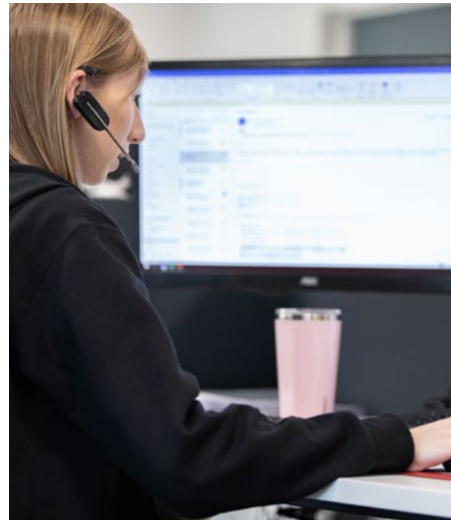
## MapApp

- Used to easily add site maps to TouchControl touchscreen repeater
- Can use any illustration from a photo to a line drawing, isometric or plan
- Simply draw hotspots onto drawing to add fire zones
- Export to microSD card to add to TouchControl RCT





# MxPro<sup>5</sup> Parts List



## Technical Support

Advanced<sup>360</sup>

Highly rated customer support. Available by telephone and online.

When you set up an Advanced360 account, you gain access to a host of helpful advice and support.

An account also gives you access to a wealth of online information, from 'how to' videos to datasheets and detailed product manuals. And everyone with an Advanced360 account can benefit from our dedicated monthly newsletter, packed with useful hints and tips.

### Services include:

- **Technical support** – available by phone and online from one of our experienced technical support engineers
- **Support history** – open and view your live support tickets and see your full support history – enabling you to refer back to previous advice where required



- **Training** – view and book training slots (direct customers only), and download your training certificates at any time
- **Software** – download software and save your software packages by installation/site
- **Literature** – download manuals, specifications, approved partner certificates, technical information and more
- **Warranty certificates** – download warranty certificates for your sites.



Sign up now at [advancedco.com](http://advancedco.com)

Product Code	Description
<b>Fire Control Panels (Apollo/Hochiki Protocol)</b>	
<b>MxPro 5 – 1-Loop Panels</b>	
MX-5101	1-Loop fire panel in small enc.
MX-5101M	1-Loop fire panel in medium enc.
MX-5101L	1-Loop fire panel in large enc.
MX-5101D	1-Loop fire panel in large-deep enc.
MX-5101R	1-Loop 19" rack-mount FACP

<b>MxPro 5 – 2-Loop Panels</b>	
MX-5201	1-2-Loop fire panel c/w 1-loop card in medium enc.
MX-5201L	1-2-Loop fire panel c/w 1-loop card in large enc.
MX-5201D	1-2-Loop fire panel c/w 1-loop card in large-deep enc.
MX-5201R	1-2-Loop 19" rack-mount FACP c/w 1-loop card
MX-5202	1-2-Loop fire panel c/w 2-loop cards in medium enc.
MX-5202L	1-2-Loop fire panel c/w 2-loop cards in large enc.
MX-5202D	1-2-Loop fire panel c/w 2-loop cards in large-deep enc.
MX-5202R	1-2-Loop 19" rack-mount FACP c/w 2-loop cards

<b>MxPro 5 – 4-Loop Panels</b>	
MX-5401	1-4-Loop fire panel c/w 1-loop card in large enc.
MX-5401D	1-4-Loop fire panel c/w 1-loop card in deep enc.
MX-5401R	1-4-Loop 19" rack-mount FACP c/w 1-loop card
MX-5401E	1-4-Loop fire panel c/w 1-loop card in extended enc.
MX-5402	1-4-Loop fire panel c/w 2-loop cards in large enc.
MX-5402D	1-4-Loop fire panel c/w 2-loop cards in deep enc.
MX-5402R	1-4-Loop 19" rack-mount FACP c/w 2-loop cards
MX-5402E	1-4-Loop fire panel c/w 2-loop cards in extended enc.
MX-5403	1-4-Loop fire panel c/w 3-loop cards in large enc.
MX-5403D	1-4-Loop fire panel c/w 3-loop cards in deep enc.
MX-5403R	1-4-Loop 19" rack-mount FACP c/w 3-loop card
MX-5403E	1-4-Loop fire panel c/w 3-loop cards in extended enc.
MX-5404	1-4-Loop fire panel c/w 4-loop cards in large enc.
MX-5404D	1-4-Loop fire panel c/w 4-loop cards in deep enc.
MX-5404R	1-4-Loop 19" rack-mount FACP c/w 4-loop card
MX-5404E	1-4-Loop fire panel c/w 4-loop cards in extended enc.

<b>MxPro 5 – 8-Loop Panels</b>	
MX-5802	2-8-Loop fire panel c/w 2-loop cards. Standard network
MX-5803	2-8-Loop fire panel c/w 3-loop cards. Standard network
MX-5804	2-8-Loop fire panel c/w 4-loop cards. Standard network
MX-5805	2-8-Loop fire panel c/w 5-loop cards. Standard network
MX-5806	2-8-Loop fire panel c/w 6-loop cards. Standard network
MX-5807	2-8-Loop fire panel c/w 7-loop cards. Standard network
MX-5808	2-8-Loop fire panel c/w 8-loop cards. Standard network
MX-5802/FT	2-8-Loop fire panel c/w 2-loop cards. Fault-tolerant network
MX-5803/FT	2-8-Loop fire panel c/w 3-loop cards. Fault-tolerant network
MX-5804/FT	2-8-Loop fire panel c/w 4-loop cards. Fault-tolerant network
MX-5805/FT	2-8-Loop fire panel c/w 5-loop cards. Fault-tolerant network
MX-5806/FT	2-8-Loop fire panel c/w 6-loop cards. Fault-tolerant network
MX-5807/FT	2-8-Loop fire panel c/w 7-loop cards. Fault-tolerant network
MX-5808/FT	2-8-Loop fire panel c/w 8-loop cards. Fault-tolerant network

AlarmCalm	
MXP-541A-002	AlarmCalm button w buzzer (Apollo)

Product Code	Description
<b>Fire Control Panels (Argus Vega Protocol)</b>	
<b>MxPro 5 – 1-Loop V Series Panels</b>	
MX-5101V	1-Loop fire panel in small enc.
MX-5101VM	1-Loop fire panel in medium enc.
MX-5101VL	1-Loop fire panel in large enc.
MX-5101VD	1-Loop fire panel in large-deep enc.
MX-5101VR	1-Loop 19" rack-mount FACP

<b>MxPro 5 – 2-Loop V Series Panels</b>	
MX-5201V	1-2-Loop fire panel c/w 1-loop card in medium enc.
MX-5201VL	1-2-Loop fire panel c/w 1-loop card in large enc.
MX-5201VD	1-2-Loop fire panel c/w 1-loop card in large-deep enc.
MX-5201VR	1-2-Loop 19" rack-mount FACP c/w 1-loop card
MX-5202V	1-2-Loop fire panel c/w 2-loop cards in medium enc.
MX-5202VL	1-2-Loop fire panel c/w 2-loop cards in large enc.
MX-5202VD	1-2-Loop fire panel c/w 2-loop cards in large-deep enc.
MX-5202VR	1-2-Loop 19" rack-mount FACP c/w 2-loop cards

<b>MxPro 5 – 4-Loop V Series Panels</b>	
MX-5401V	1-4-Loop fire panel c/w 1-loop card in large enc.
MX-5401VD	1-4-Loop fire panel c/w 1-loop card in deep enc.
MX-5401VR	1-4-Loop 19" rack-mount FACP c/w 1-loop card
MX-5401VE	1-4-Loop fire panel c/w 1-loop card in extended enc.
MX-5402V	1-4-Loop fire panel c/w 2-loop cards in large enc.
MX-5402VD	1-4-Loop fire panel c/w 2-loop card in deep enc
MX-5402VR	1-4-Loop 19" rack-mount FACP c/w 2-loop cards
MX-5402VE	1-4-Loop fire panel c/w 1-loop card in extended enc.
MX-5403V	1-4-Loop fire panel c/w 3-loop cards in large enc.
MX-5403VD	1-4-Loop fire panel c/w 3-loop card in deep enc
MX-5403VR	1-4-Loop 19" rack-mount FACP c/w 3-loop card
MX-5403VE	1-4-Loop fire panel c/w 1-loop card in extended enc.
MX-5404V	1-4-Loop fire panel c/w 4-loop card in large enc.
MX-5404VD	1-4-Loop fire panel c/w 4-loop card in deep enc
MX-5404VR	1-4-Loop 19" rack-mount FACP c/w 4-loop card
MX-5404VE	1-4-Loop fire panel c/w 1-loop card in extended enc.

<b>MxPro5 – 8-Loop V Series Panels</b>	
MX-5802V	2-8-Loop fire panel c/w 2-loop cards. Standard network
MX-5803V	2-8-Loop fire panel c/w 3-loop cards. Standard network
MX-5804V	2-8-Loop fire panel c/w 4-loop cards. Standard network
MX-5805V	2-8-Loop fire panel c/w 5-loop cards. Standard network
MX-5806V	2-8-Loop fire panel c/w 6-loop cards. Standard network
MX-5807V	2-8-Loop fire panel c/w 7-loop cards. Standard network
MX-5808V	2-8-Loop fire panel c/w 8-loop cards. Standard network
MX-5802V/FT	2-8-Loop fire panel c/w 2-loop cards. Fault-tolerant network
MX-5803V/FT	2-8-Loop fire panel c/w 3-loop cards. Fault-tolerant network
MX-5804V/FT	2-8-Loop fire panel c/w 4-loop cards. Fault-tolerant network
MX-5805V/FT	2-8-Loop fire panel c/w 5-loop cards. Fault-tolerant network
MX-5806V/FT	2-8-Loop fire panel c/w 6-loop cards. Fault-tolerant network
MX-5807V/FT	2-8-Loop fire panel c/w 7-loop cards. Fault-tolerant network
MX-5808V/FT	2-8-Loop fire panel c/w 8-loop cards. Fault-tolerant network

AlarmCalm	
MXP-541V-002	AlarmCalm button w buzzer (Argus)



# MxPro<sup>5</sup> Parts List

Product Code	Description
<b>Fire Control Panels (Nittan Evolution Protocol)</b>	
<b>MxPro 5 – 1-Loop N Series Panels</b>	
MX-5101N	1-Loop fire panel in small enc.
MX-5101NM	1-Loop fire panel in medium enc.
MX-5101NL	1-Loop fire panel in large enc.
MX-5101ND	1-Loop fire panel in large-deep enc.
MX-5101NR	1-Loop 19" rack-mount FACP

<b>MX-5200N Series Panels</b>	
MX-5201N	1-2-Loop fire panel c/w 1-loop card
MX-5201NL	1-2-Loop fire panel c/w 1-loop card in large enc.
MX-5201ND	1-2-Loop fire panel c/w 1-loop card in large-deep enc.
MX-5201NR	1-2-Loop 19" rack-mount FACP c/w 1-loop card
MX-5202N	1-2-Loop fire panel c/w 2-loop cards
MX-5202NL	1-2-Loop fire panel c/w 2-loop cards in large enc.
MX-5202ND	1-2-Loop fire panel c/w 2-loop cards in large-deep enc.
MX-5202NR	1-2-Loop 19" rack-mount FACP c/w 2-loop cards

<b>MX-5400N Series Panels</b>	
MX-5401N	1-4-Loop fire panel c/w 1-loop card in large enc.
MX-5401ND	1-4-Loop fire panel c/w 1-loop card in deep enc.
MX-5401NR	1-4-Loop 19" rack-mount FACP c/w 1-loop card
MX-5401NE	1-4-Loop fire panel c/w 1-loop card in extended enc.
MX-5402N	1-4-Loop fire panel c/w 2-loop cards in large enc.
MX-5402ND	1-4-Loop fire panel c/w 2-loop card in deep enc.
MX-5402NR	1-4-Loop 19" rack-mount FACP c/w 2-loop cards
MX-5402NE	1-4-Loop fire panel c/w 1-loop card in extended enc.
MX-5403N	1-4-Loop fire panel c/w 3-loop cards in large enc.
MX-5403ND	1-4-Loop fire panel c/w 3-loop card in deep enc.
MX-5403NR	1-4-Loop 19" rack-mount FACP c/w 3-loop card
MX-5403NE	1-4-Loop fire panel c/w 1-loop card in extended enc.
MX-5404N	1-4-Loop fire panel c/w 4-loop card in large enc.
MX-5404ND	1-4-Loop fire panel c/w 4-loop card in deep enc.
MX-5404NR	1-4-Loop 19" rack-mount FACP c/w 4-loop card
MX-5404NE	1-4-Loop fire panel c/w 1-loop card in extended enc.

<b>MX-5800N Series Panels</b>	
MX-5802N	2-8-Loop fire panel c/w 2-loop cards. Standard network
MX-5803N	2-8-Loop fire panel c/w 3-loop cards. Standard network
MX-5804N	2-8-Loop fire panel c/w 4-loop cards. Standard network
MX-5805N	2-8-Loop fire panel c/w 5-loop cards. Standard network
MX-5806N	2-8-Loop fire panel c/w 6-loop cards. Standard network
MX-5807N	2-8-Loop fire panel c/w 7-loop cards. Standard network
MX-5808N	2-8-Loop fire panel c/w 8-loop cards. Standard network
MX-5802N/FT	2-8-Loop fire panel c/w 2-loop cards. Fault-tolerant network
MX-5803N/FT	2-8-Loop fire panel c/w 3-loop cards. Fault-tolerant network
MX-5804N/FT	2-8-Loop fire panel c/w 4-loop cards. Fault-tolerant network
MX-5805N/FT	2-8-Loop fire panel c/w 5-loop cards. Fault-tolerant network
MX-5806N/FT	2-8-Loop fire panel c/w 6-loop cards. Fault-tolerant network
MX-5807N/FT	2-8-Loop fire panel c/w 7-loop cards. Fault-tolerant network
MX-5808N/FT	2-8-Loop fire panel c/w 8-loop cards. Fault-tolerant network

Product Code	Description
<b>Remote Terminals</b>	
MX-5010	Remote display terminal (RDT). Standard network
MX-5010/FT	Remote display terminal (RDT). Fault tolerant
MX-5020	Remote control terminal (RCT) small. Standard network
MX-5020/FT	Remote control terminal (RCT) small. Fault tolerant
MX-5030	Remote control terminal (RCT) large. Standard network
MX-5030/FT	Remote control terminal (RCT) large. Fault tolerant

<b>TouchControl</b>	
TOUCH-10	Touchscreen terminal (standard network)
TOUCH-10/FT	Touchscreen terminal (fault-tolerant network)
TOUCH-10-SBB	Touchscreen terminal – surface back box

<b>Peripheral Expansion Network Node</b>	
MXP-545	PENN (standard network)
MXP-545/FT	PENN (fault-tolerant network)

<b>Peripherals</b>	
MXP-501	Remote battery temperature sensor
MXP-502	Loop driver card – Apollo, Hochiki, Argus Vega
MXP-567	Loop driver card – Nittan
MXP-503 *	Network card – standard
MXP-505	Sounder (pt13) active EOL
MXP-506	Routing termination card
MXP-507 *	2-way relay card
MXP-509 *	Network card – fault tolerant
MXP-512 *	Printer assembly
MXS-509	Spare paper roll for Mxp-512 printer
MXP-532 *	Routing / protection interface
MXP-536 *	P-BUS 8-way conventional zone card
MXP-537 *	P-BUS 10-way switch input card
MXP-538	P-BUS 16-way switch (form factor) module 16 switches, 3 integrated, programmable LED's per switch (red, yellow, green)
MXP-539	P-BUS MIMIC driver card (16 input + 48 output) 16 switch inputs and 48 LED driver outputs. Supports up to 5 Mxp-052 10 relay output modules
MXP-547 *	ESPA pager interface

\* Add F - for fitted

<b>Modems</b>	
MXP-528	Modem card (24V)
MXP-528F	Modem card (24V) – fitted*
MXP-028-BX	Modem card (24V) – boxed

\* Can be fitted to a medium, large or extended enclosure only

<b>Key Switches</b>	
MXP-511	Access enable key switch
MXP-511F	Access enable key switch – fitted
MXP-516	2-POS key switch (trapped)
MXP-516F	2-POS key switch (trapped) – fitted
MXP-517	2-POS key switch (untrapped)
MXP-517F	2-POS key switch (untrapped) – fitted
MXP-515	3-POS key switch (trapped)
MXP-515F	3-POS key switch (trapped) – fitted
MXP-518-001	Access enable key switch for 5010/5020
MXP-518-001F	Access enable key switch for 5010/5020 – fitted
MXP-518-002	Access enable key switch for 5030
MXP-518-002F	Access enable key switch for 5030 – fitted
MXP-519	2-POS key switch (Mom – trapped)
MXP-519F	2-POS key switch (Mom – trapped) – fitted

Product Code	Description
<b>LED Indication</b>	
MXP-513M-050RD *	50 Zone fire (red) – medium enc
MXP-513M-050RY *	25 Zone fire (red) + fault (yel) – medium enc.
MXP-513M-050YL *	50 Zone fault (yel) – medium enc.
MXP-513L-050RD *	50 Zone fire (red) – large enc
MXP-513L-050RY *	25 Zone fire (red) + fault (yel) – large enc.
MXP-513L-050YL *	50 Zone fault (yel) – large enc.
MXP-513L-100RD *	100 Zone fire (red) – large enc.
MXP-513L-100RY *	50 Zone fire (red) + fault (yel) – large enc.
MXP-513L-100YL *	100 Zone fault (yel) – large enc.
MXP-513L-200RY *	200 Zone – large enc (red/yel)
MXP-513L-050CRY *	50 Zone column format – large enc (red/yel)
MXP-513L-050CRYG *	50 Zone column format – large enc. (30 x red/yel – 20 grn/yel)
MXP-513-050RD *	50 Zone fire (red) – extended enc.
MXP-513-050RY *	25 Zone fire (red) + fault (y) – extended enc.
MXP-513-050YL *	50 Zone fault (yel) – extended enc.
MXP-513-100RD *	100 Zone fire (red) – extended enc.
MXP-513-100RY *	50 Zone fire (red) + fault (y) – extended enc.
MXP-513-100YL *	100 Zone fault (yel) – extended enc.
MXP-513-200RY *	200 Zone – extended enc. (red/yel)
MXP-513-050CRY *	50 Zone column format – extended enc. (red/yel)
MXP-513-050CRYG *	50 Zone column format – extended enc. (30 x red/yel – 20 grn/yel)

\* Add F - for fitted

<b>Spares</b>	
MXS-501 *	Spare single loop base card c/w PSU (no loop cards) *Add V for AV protocol, N for Evolution
MXS-502 *	Spare two loop base card c/w PSU (no loop cards) *Add V for AV protocol
MXS-503 *	Spare four loop base card c/w PSU (no loop cards) *Add V for AV protocol
MXS-504	Spare display card
MXS-506	Spare MX-5010 card only
MXS-506/FT	Spare MX-5010 card only – fault-tolerant
MXS-507	Spare MX-5020 card only
MXS-507/FT	Spare MX-5020 card only – fault-tolerant
MXS-508	Spare MX-5030 card only
MXS-508/FT	Spare MX-5030 card only – fault-tolerant
MXS-511	Spare access enable key switch (Lorlin style)
MXS-516	Spare 2-position key switch – trapped (Lorlin style)
MXS-517	Spare 2-position key switch – un-trapped (Lorlin style)
MXS-511-KEY	Spare Mxp-511 access enable key
MXS-518	MX-5000 spare kits
MXS-519	MX-5000 rack-mount spare kit
MXS-520	MX-5000 remote terminal spares kit
MXS-521	MX-5000 battery leads
MXS-522	MX-5000 rack-mount battery leads
MXS-5-FP-S	Spare fascia plate and membrane – small
MXS-5-FP-ML	Spare fascia plate and membrane – medium / large

Product Code	Description
<b>Flushing Bezels</b>	
MXM-501	Semi-flushing bezel – small enc.
MXM-502	Semi-flushing bezel – medium enc.
MXM-503	Semi-flushing bezel – large enc.
MXM-509	Semi-flushing bezel – MX-5030 RCT - large
MXM-521	Semi-flushing bezel – MX-5010 / 5020
MXM-536	Semi-flushing bezel – extended enc.

<b>Plexi glass (Lexan) Door – Retro-fit</b>	
MXM-507	Glazed door kit – large enclosure
MXM-507Z	Glazed door kit (double aperture) – large enc.
MXM-508	Glazed door kit – medium enclosure
MXM-508Z	Glazed door kit (double aperture) – medium enc.
MXS-505	Spare key – MxPro 5 glazed door
MXM-538-D1	Glazed door kit with zone aperture – extended enc.
MXM-538-D2	Glazed door kit with 2 x glazed apertures – extended enc.
MXM-538-D3	Glazed door kit with mimic aperture – extended enc.

<b>Enclosures</b>	
MXM-504	Medium termination enc.
MXM-505	Large termination enc.
MXM-506	Large-deep termination enc.
MXM-516	Medium battery (18ah) / utility enc.
MXM-517	Large battery (18ah) / utility enc.
MXM-518	Deep utility enc.
MXM-519	Chassis mounting plate for utility enc. (3 cards)
MXM-546	MX-5000 deep battery (45ah) enc.
MXM-522-BB	Small enc. – spare back box
MXM-522-D1	Small enc. - spare door
MXM-523-BB	Medium enc. – spare back box
MXM-523-D1	Medium enc. – spare door
MXM-523-D2	Medium enc. – spare door (c/w zone aperture)
MXM-524-BB	Large enc. – spare back box
MXM-524-D1	Large/deep enc. – spare door
MXM-524-D2	Large/deep enc. – spare door (c/w zone aperture)
MXM-524-D3	Large/deep enc. – spare door (c/w 2 x switch apertures)
MXM-524-D4	Large/deep enc. – mimic door with single aperture
MXM-524-D5	Large/deep enc. – blank door
MXM-525-BB	Deep enclosure – spare back box
MXM-530	Cable clamp
MXM-531	Medium document enc.
MXM-532	Large document enc.
MXM-533	Modem/ESPA/BMS interface enc.
MXM-537-BB	Extended enc. – back box
MXM-537-BP	Extended enc. – blank plate for zone LED aperture
MXM-537-D1	Extended enc. – spare door
MXM-537-D2	Extended enc. – spare panel door with mimic aperture
MXM-543-BB	Mx-5010/5020 – spare back box
MXM-544-BB	Mx-5030 – spare back box
MXM-543-D1	Mx-5010/5020 – spare panel cover
MXM-543-D2	Mx-5010/5020 – spare panel cover + k/s app
MXM-544-D1	Mx-5030 – spare panel cover
MXM-543-D2	Mx-5030 – spare panel cover + k/s app



# MxPro<sup>5</sup> Parts List

Product Code	Description
<b>Special Finishes</b>	
MXM-501-SSB	Semi-flushing bezel – small enc. stainless steel brushed
MXM-501-SSM	Semi-flushing bezel – small enc. stainless steel mirrored
MXM-502-SSB	Semi-flushing bezel – medium enc. stainless steel brushed
MXM-502-SSM	Semi-flushing bezel – medium enc. stainless steel mirrored
MXM-503-SSB	Semi-flushing bezel – large enc. stainless steel brushed
MXM-503-SSM	Semi-flushing bezel – large enc. stainless steel mirrored
MXM-509-SSB	Semi-flushing bezel – RCT large. Stainless steel brushed
MXM-509-SSM	Semi-flushing bezel – RCT large stainless steel mirrored
MXM-521-SSB	Semi-flushing bezel – MX-5010 / 5020 stainless steel brushed
MXM-521-SSM	Semi-flushing bezel – MX-5010 / 5020 stainless steel mirrored
MXM-522-D1-SSB *	Small enc. – spare door. Stainless steel brushed
MXM-522-D1-SSM	Small enc. – spare door. Stainless steel mirrored
MXM-523-D1-SSB *	Medium enc. – spare door. Stainless steel brushed
MXM-523-D1-SSM	Medium enc. – spare door. Stainless steel mirrored
MXM-523-D2-SSB *	Medium enc. – spare door (c/w zone aperture). Stainless steel brushed
MXM-523-D2-SSM	Medium enc. – spare door (c/w zone aperture). Stainless steel mirrored
MXM-524-D1-SSB *	Large/deep enc. – spare door. Stainless steel brushed
MXM-524-D1-SSM	Large/deep enc. – spare door. Stainless steel mirrored
MXM-524-D2-SSB *	Large/deep enc. – spare door (c/w zone aperture). Stainless steel brushed
MXM-524-D2-SSM	Large/deep enc. – spare door (c/w zone aperture). Stainless steel mirrored
MXM-543-D1-SSB	MX-5010/5020 – panel cover. Stainless steel brushed
MXM-543-D1-SSM	MX-5010/5020 – panel cover. Mirror polished
MXM-543-D2-SSB	MX-5010/5020 – panel cover + KS Ap. Stainless steel brushed.
MXM-543-D2-SSM	MX-5010/5020 – panel cover + KS Ap. Mirror polished
MXM-544-D1-SSB	MX-5030 RCT – panel cover. Stainless steel brushed.
MXM-544-D1-SSM	MX-5030 RCT – panel cover. Mirror polished
MXM-544-D2-SSB	MX-5030 RCT – panel cover + KS Ap. Stainless steel brushed
MXM-544-D2-SSM	MX-5030 RCT – panel cover + KS Ap. Mirror polished
MXM-524-BB-SSB	Spare large back box for use w/SS door (MW334E)
MXM-523-BB-SSB	Spare medium back box for use w/SS door (MW334E)
MXM-522-BB-SSB	Spare small back box for use w/SS door (MW334E)
MXM-525-BB-SSB	Spare deep back box for use w/SS door (MW334E)

\* Add F - fitted (includes Silver back box & hinge strip)

Product Code	Description
<b>Rack-Mount Enclosure</b>	
MXM-510-16U	IP55 19" Rack-mount enclosure – 16U high
MXM-510-20U	IP55 19" Rack-mount enclosure – 20U high
MXM-510-KL	CAM key-lock kit for outer door
MXM-510-BS	19" Rack-mount – battery shelf
MXM-510-BS1	19" Rack-mount – battery shelf lower
MXM-510-CP	19" Rack-mount – chassis plate
MXP-513R-050RD	19" Rack-mount 4U LED card – 50 zone fire (red)
MXP-513R-050RY	19" Rack-mount 4U LED card – 50 zone fire/flt (r/y)
MXP-513R-050YL	19" Rack-mount 4U LED card – 50 zone flt (yel)
MXP-513R-100RD	19" Rack-mount 4U LED card – 100 zone fire (red)
MXP-513R-100RY	19" Rack-mount 4U LED card – 100 zone fire/flt (r/y)
MXP-513R-100YL	19" Rack-mount 4U LED card – 100 zone fault (yellow)
MXP-513R-200RY	19" Rack-mount 4U programmable LED card – 200 zone (red/yel)
MXP-513R-050CRY	19" Rack-mount 4U programmable LED card – 50 zone column format (red/yel)
MXP-513R-050CRYG	19" Rack-mount 4U programmable LED card – 50 zone column format (30 x red/yel - 20 x grn/yel)
MXP-514	MxPro 5 rack AC filter card
MXM-511-1U	19" Rack-mount blanking plate – 1U
MXM-511-2U	19" Rack-mount blanking plate – 2U
MXM-511-3U	19" Rack-mount blanking plate – 3U
MXM-511-4U	19" Rack-mount blanking plate – 4U
MXM-511-6U	19" Rack-mount blanking plate – 6U
MXM-511-1U-TOP	19" Rack-mount blanking plate – 1U-TOP
MXM-512	19" Rack-mount blanking LED plate – 4U
MXM-513-BB	19" Rack-mount back box – 6U
MXM-513-BP	19" Rack-mount switch / LED blank plate – 6U
MXM-513-D1	19" Rack-mount door D1 blank – 6U
MXM-513-D2	19" Rack-mount door D2 LED – 6U
MXM-513-D3	19" Rack-mount door D1 c/w aperture – 6U
MXM-513-FP	19" Rack-mount fascia plate blank – 6U
MXM-513-MF	19" Rack-mount switch / LED mounting frame – 6U
MXM-514-BB	19" Rack-mount back box – 8U
MXM-514-D1	19" Rack-mount door D1 c/w aperture – 8U
MXM-514-FP	19" Rack-mount fascia plate blank – 8U
MXM-515-6U	19" Rack-mount chassis plate – 6U
MXM-515-8U	19" Rack-mount chassis plate – 8U
MXM-535-D1	19" Rack-mount 13U hinged door (accepts 9 x MXP-538 switch cards or blank plates)

Product Code	Description
<b>Network Boosters and Convertors</b>	
MXP-030	Standard network booster/isolator (DIN-rail module)
MXP-631-MM	Ad-Net / fibre optic converter multi-mode
MXP-631-SM	Ad-Net / fibre optic converter single-mode
MXP-542	24VDC – 24VDC convertor / isolator (for use with Mxp-631 Fibre network convertors and MxPro 5)

Product Code	Description
<b>Mimic Driver Cards, Indicators &amp; Network I/O Controllers</b>	
MXP-020-100	100 way remote LED mimic driver (un-boxed)
MXP-020-100/FT	Fault tolerant 100-way remote LED mimic driver (un-boxed)
MXP-045	50-way network I/O controller (un-boxed)
MXP-045/FT	50-way fault-tolerant network I/O controller (un-boxed)
MXS-026	High intensity red LED & 600mm lead for Mxp-020 / 027 & 045
MXS-026-YEL	High intensity yellow LED & 600mm lead for Mxp-020 / 027 & 045
MXS-026-GRN	High intensity green LED & 600mm lead for Mxp-020 / 027 & 045
MXP-052	Mimic driven 10-way relay output card
MXP-052-DIN	Mimic driven 10-way relay output card in din-rail carrier
MXS-031-2T	2-Position key switch trapped for Mxp-045
MXS-031-2U	2-Position key switch un-trapped for Mxp-045
MXS-031-3U	3-Position key switch un-trapped for Mxp-045

Product Code	Description
<b>P-Bus Expansion Cards</b>	
MXP-034 (F)*	Peripheral bus – 4-way sounder card
MXP-034-BXP	Peripheral bus – 4-way sounder card with 4A PSU (boxed)
MXP-035(F)*	Peripheral bus – 4-way relay card
MXP-035-BXP	Peripheral bus – 4-way relay card with 1.5A PSU (boxed)

\* Add F - for fitted (except Mx-5100)

Product Code	Description
<b>EN54-4 'Approved' Power Supply Units</b>	
MXP-549	1.5A EN54-4 PSE & battery charger
MXP-550	3A EN54-4 PSE & battery charger
MXP-550/D	3A EN54-4 PSE & battery charger. Deep enc.
MXP-551	5A EN54-4 PSE & battery charger
MXP-551/D	5A EN54-4 PSE & battery charger. Deep enc.
MXP-049	1.5A EN54-4 PSU & charger (boxed – 7Ah battery capacity)
MXP-050-001	3A EN54-4 PSU & charger (boxed – 7Ah battery capacity)
MXP-050-002	3A EN54-4 PSU & charger (boxed – 17Ah battery capacity)
MXP-051	5A EN54-4 PSU & charger (boxed – 17Ah battery capacity)
MXP-051/D	5A EN54-4 PSU & charger (boxed – 38Ah battery capacity)

Product Code	Description
<b>MxPro 5 Input and Output Cards</b>	
MXP-046	Damper interface module (Apollo protocol)
MXP-046-BX1	Damper interface module – boxed (Apollo protocol)
MXP-053	2-way input stretch / latch module

Product Code	Description
<b>MxPro 5 Interfaces</b>	
MXP-510-BX	BMS / Graphics I/F (boxed)
MXP-510-BX/FT	BMS / Graphics I/F (boxed) fault tolerant
MXP-510	BMS / Graphics I/F (card only)
MXP-510/FT	BMS / Graphics I/F (card only) fault tolerant
MXP-547-BX	ESPA Pager interface (boxed)
MXP-554-BX	IP Gateway (boxed)
MXP-554-BX/FT	IP Gateway (boxed) fault tolerant
MXP-554	IP Gateway (card only)
MXP-554/FT	IP Gateway (card only) fault tolerant
MXP-642	Commander- BACnet / Modbus (IP) interface (standard/basic) **
MXP-642C	Commander- BACnet / Modbus (IP) interface (configured) **
23-PSU/250	Power supply for commander 12VDC 2.5A

\* Add F - fitted (except Mx-5100). \*\* Requires Mxp-510 BMS Interface

Product Code	Description
<b>DynamixTools PC Software</b>	
See "Cables & Connectors" section for spare and USB compatible upload / download leads	
PC-NET-003	MxPro configuration software & lead
PC-NET-003-USB	MxPro configuration software & USB upload/download lead
PC-NET-004	MxPro remote dial-up software (virtual panel)
PC-NET-005-L1	Graphical control software* standard version up to 3 panels
PC-NET-005-L2	Graphical control software* standard version up to 15 panels
PC-NET-005-L2p	Graphical control software* premium version up to 15 panels
PC-NET-005-L3	Graphical control software* standard version up to 200 panels
PC-NET-005-L3p	Graphical control software* premium version up to 200 panels
PC-NET-005-SWM	Smart watch module
PC-NET-005-SWM6	Smart watch module (4-6 panel)
PC-NET-005-SWM15	Smart watch module (7-15 panel)
PC-NET-005-SWM4R	Smart watch module – 4 inputs
PC-NET-005-SCU	Smart cube unit
PC-NET-05-L1R-L2R	Dongle upgrade L1R to L2R
PC-NET-05-L2R-L3R	Dongle upgrade L2R to L3R
PC-NET-05-L2R-L2P	Dongle upgrade L2R to L2P
PC-NET-05-L2P-L3P	Dongle upgrade L2P to L3P
PC-NET-05-L3R-L3P	Dongle upgrade L3R to L3P
PC-NET-007	MxPro logo programming software
PC-NET-015	MxPro service tool software

\* requires Mxp-510 BMS interface

Product Code	Description
<b>Cables &amp; Connectors (Upload/Download Leads)</b>	
UP-001	RS232 9-way to 3-way plug in connector (MX upload/download lead)
UP-006	USB upload /download lead for MX config software



**Email:** [enquiries@advancedco.com](mailto:enquiries@advancedco.com)  
**Web:** [www.advancedco.com](http://www.advancedco.com)

 @advancedlive

 Advanced

 Advanced Fire

 **NBS Source**  
PARTNER

Find us on NBS National BIM Library  
[www.nationalbimlibrary.com/advanced-electronics-ltd](http://www.nationalbimlibrary.com/advanced-electronics-ltd)

MxPro 5 and all other Advanced product brands are  
trademarks of Advanced Electronics Ltd. All rights reserved



A **Halma** company